

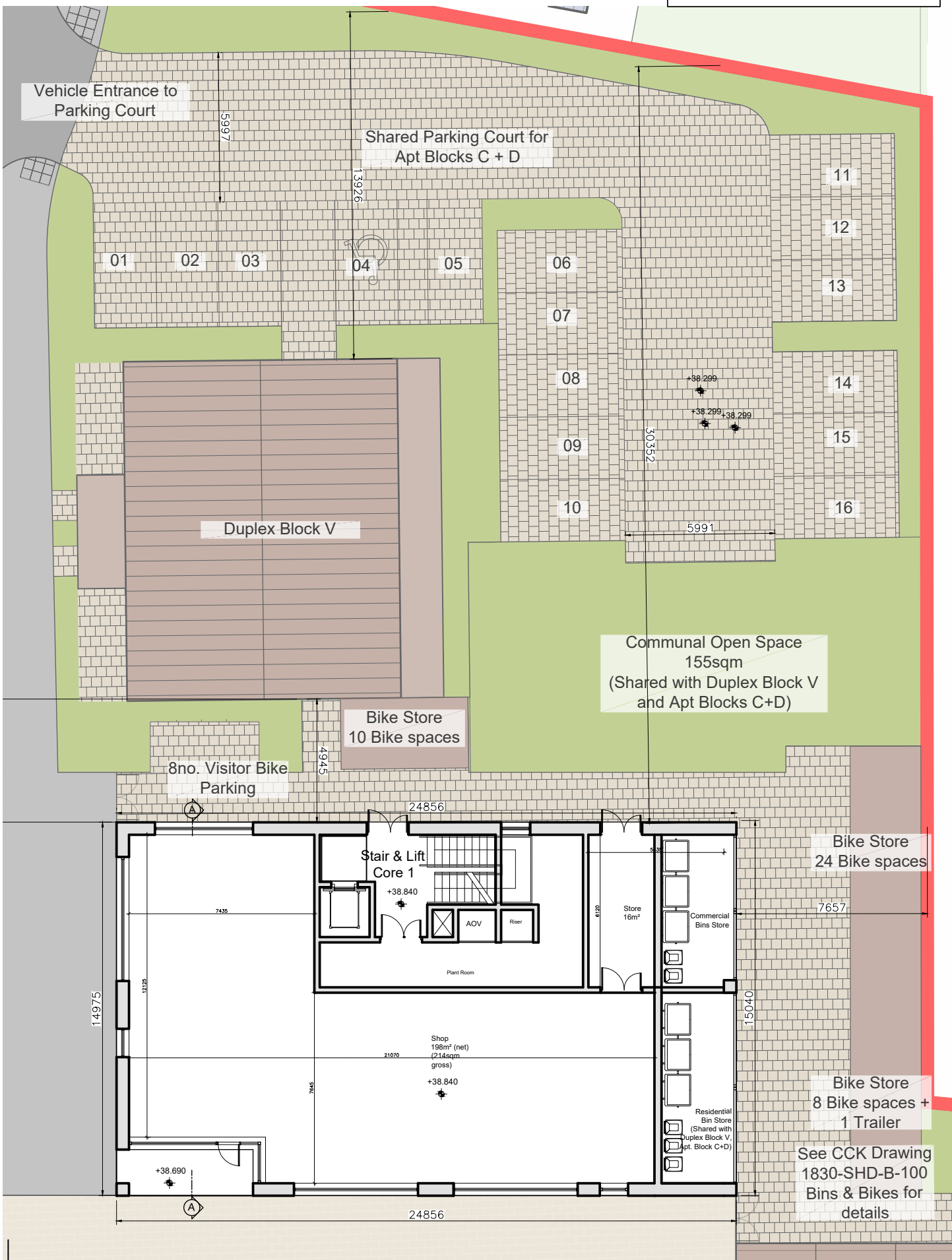
APARTMENT BLOCK C
FIRST FLOOR PLAN



Unit Type

2 Bed Apartment - 4 Person

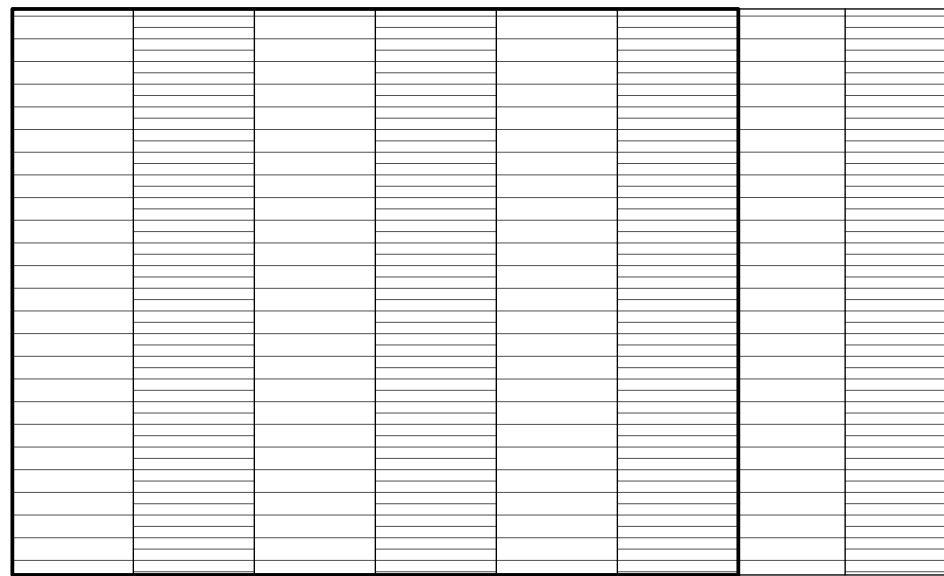
Apt. Block	1 Beds	2 Beds	Total Units
C	0	8	8



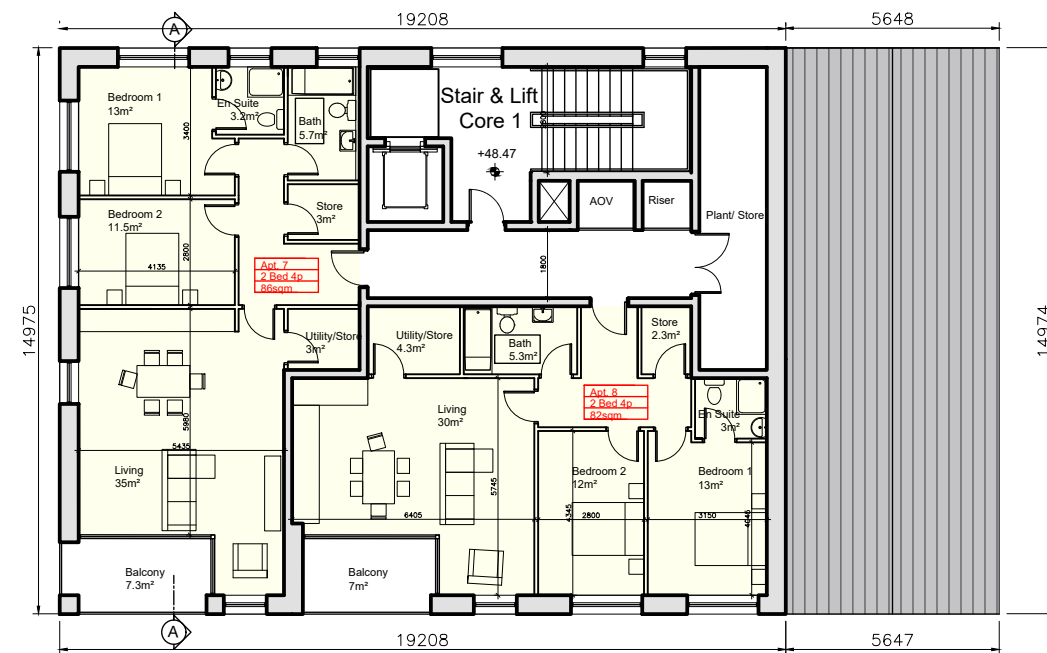
APARTMENT BLOCK C
GROUND FLOOR PLAN



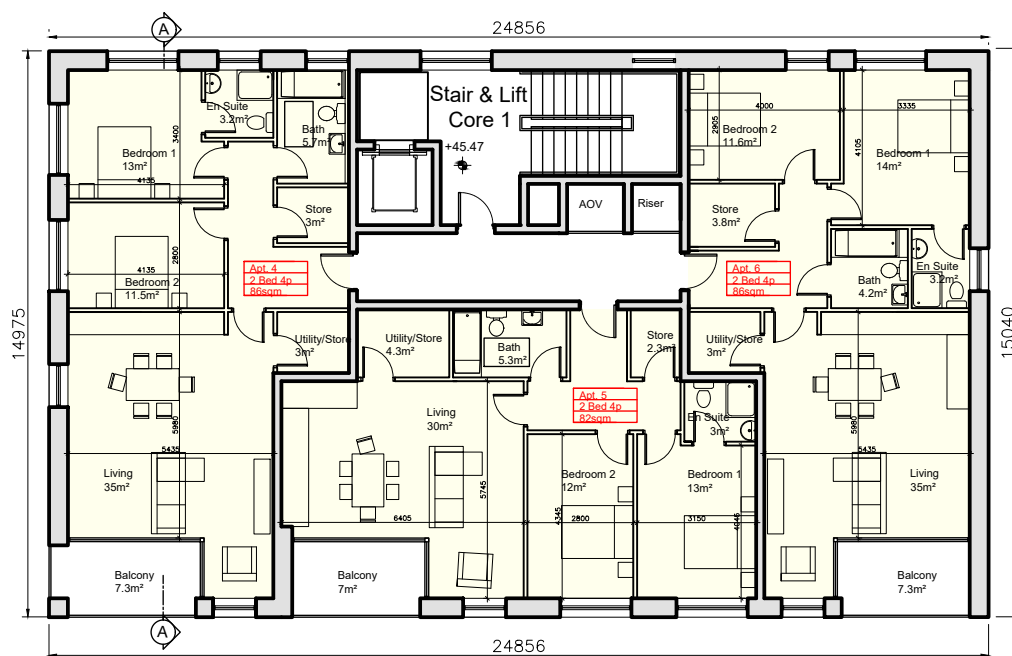
APARTMENT BLOCK C
SOUTH ELEVATION



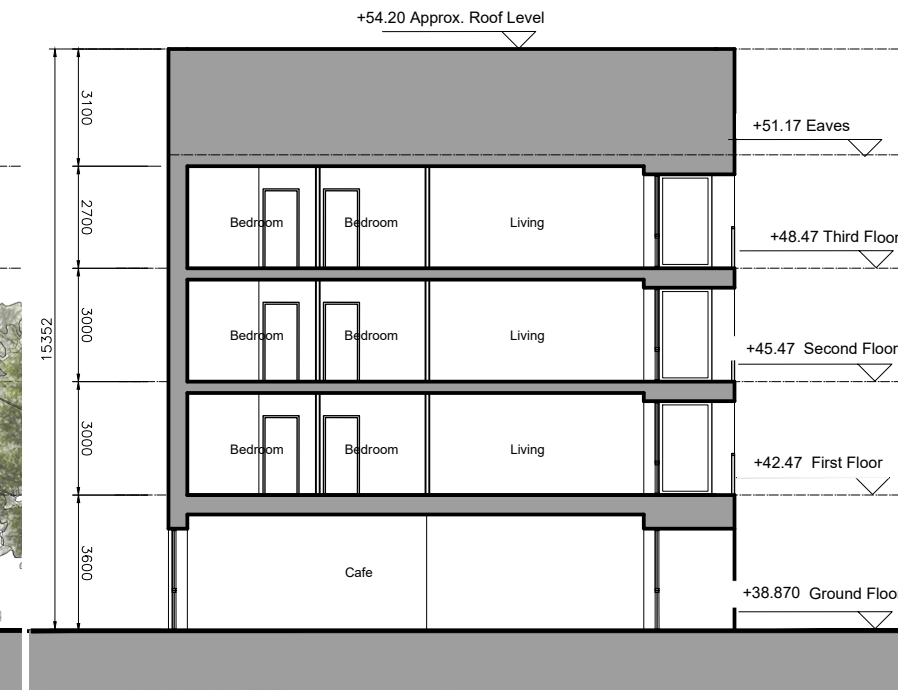
APARTMENT BLOCK C
ROOF PLAN



APARTMENT BLOCK C
THIRD FLOOR PLAN



APARTMENT BLOCK C
SECOND FLOOR PLAN



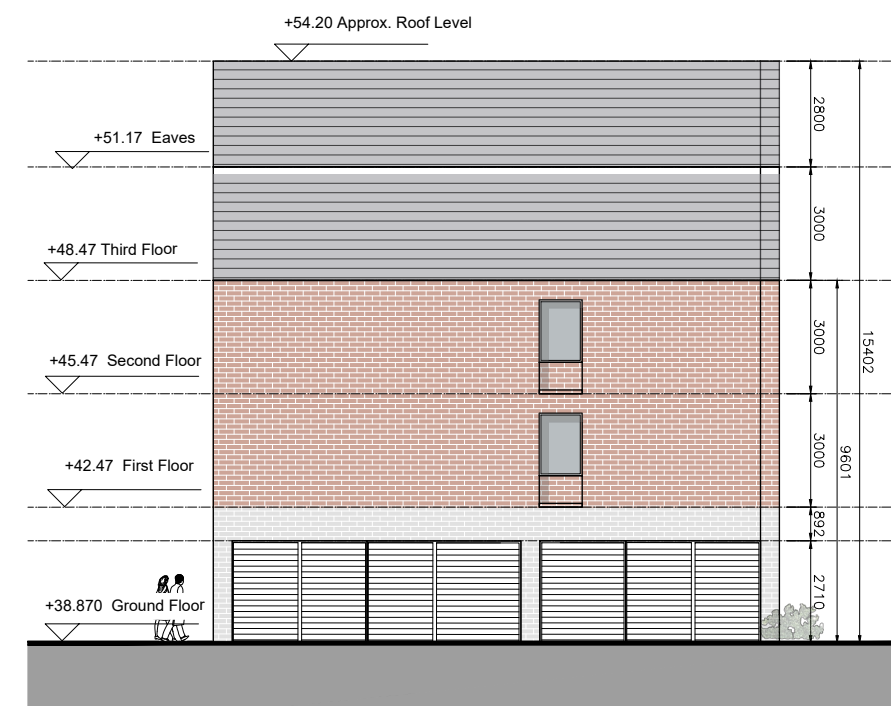
APARTMENT BLOCK C
SECTION A-A



APARTMENT BLOCK C
NORTH ELEVATION



APARTMENT BLOCK C
WEST ELEVATION



APARTMENT BLOCK C
EAST ELEVATION

- This drawing is copyright.
- Do not scale this drawing.
 - Errors and omissions to be immediately notified to Architect.
 - All dimensions to be checked on site.
 - To be read with relevant Engineers drawings.

Note on Internal Floor Plans
All noted room areas are gross.

The proposed areas and aggregate areas comply with *Sustainable Urban Housing: Design Standards for New Apartments Guidelines for Planning Authorities. (December 2020)*

Where bedroom areas are noted they are exclusive of any built-in storage space.

Storage is generally provided off the hallway or kitchen, and is not provided within a bedroom. Furniture, fittings and fixtures shown on the plans are indicative.

External Finishes:

Roof:
Slate or clay/concrete tiles with solar thermal or photovoltaic panels subject to orientation and detailed design

Walls:
Selected facing brick with render where indicated on drawings

Windows:
Aluminium framed window system

Gutters/downpipes:
uPVC or aluminium

Balconies:
Projecting: Toughened glazing & stainless steel handrails on precast concrete or metal frame galvanized steel base and guarding/ railing.

Entrance Canopy:
Pressed or standing seam metal on Timber framing

revisions	date	in/s
description		
Apartment Block C		
Floor Plans, Roof Plan		
Section & Elevations		
job	Development at Mooretown, Swords Phase 3	scale 1:200 A2 date APL '22 drawn AOL checked PG
client	Gerard Gannon Properties	
issue	Planning SHD Stage 3	
CONROY CROWE KELLY ARCHITECTS		
65 MERRION SQUARE DUBLIN 2		
PHONE 66139901 FAX 6765715 e-mail info@eck.ie		